

# PassPort® CPS R03.02.00

## Programming Hints:

### Converting PassPort Codeplugs

For HT1250-LS<sup>+</sup>™ Portable and CDM1550-LS<sup>+</sup>™ Mobile radios programmed with PassPort CPS (PPCPS) R03.00.04 or earlier, PPCPS R03.02.00 can be used to convert these existing PassPort codeplugs to the latest PassPort codeplug format.

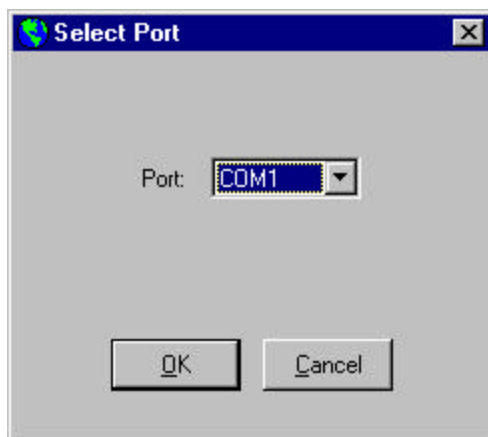
The following steps are provided as guide in the conversion of PassPort codeplugs to the new format:

1. Launch the PPCPS R03.02.00. The version can be verified with the following steps:
  - Select the “Help” menu.
  - Select the “About PPCPS” menu item and the “About PPCPS” window is displayed. Verify that the version is R03.02.00.
2. Read the radio.
  - a. Click on the “Read Device” icon in the tool bar



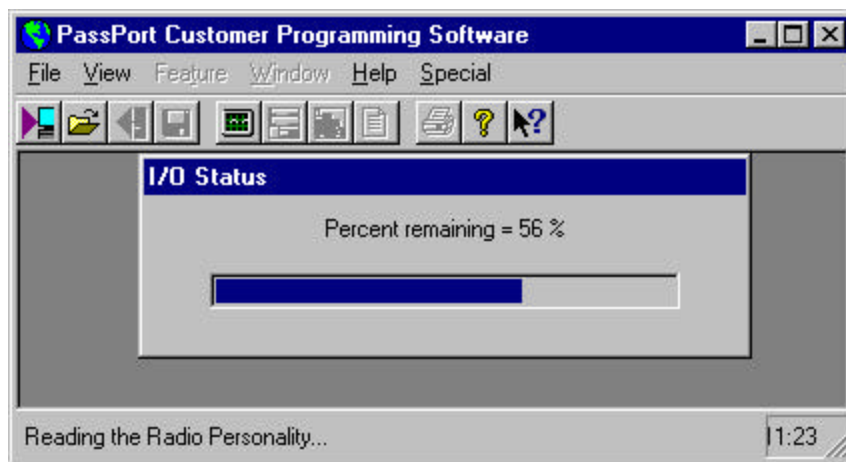
OR

- b. Select “File > Read Device” and the “Select Port” window appears.



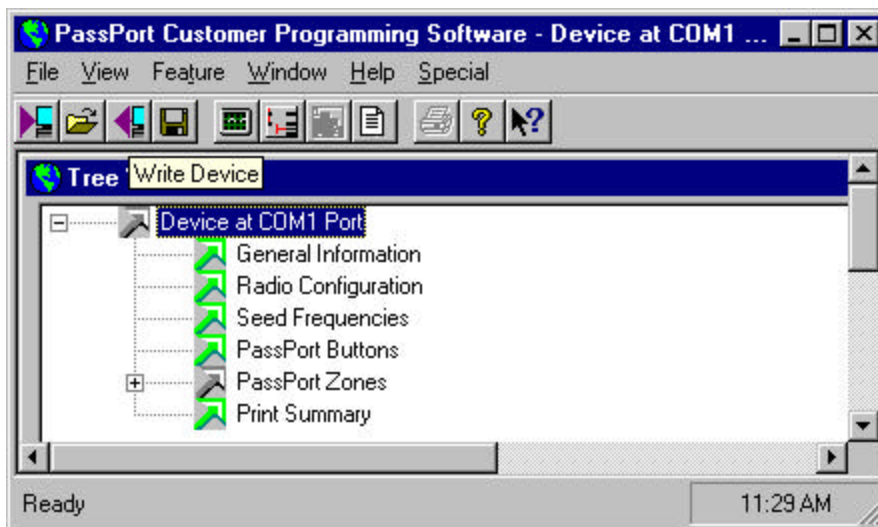
Select the port that the RIB or RIB'less cable is connected to and click the “OK” button.

3. The “I/O Status” bar appears while reading



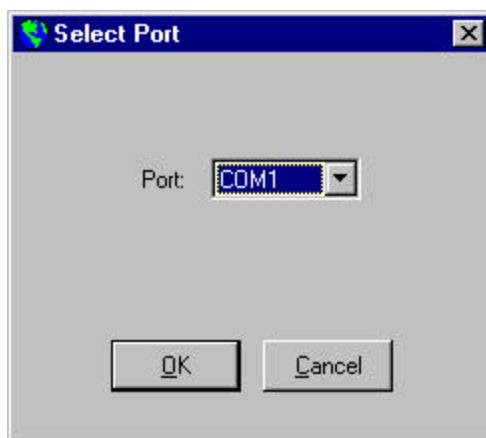
4. Upon completion, the “Tree View” window appears.

5. Write to the radio.
  - a. Click on the “Write Device” icon in the tool bar.



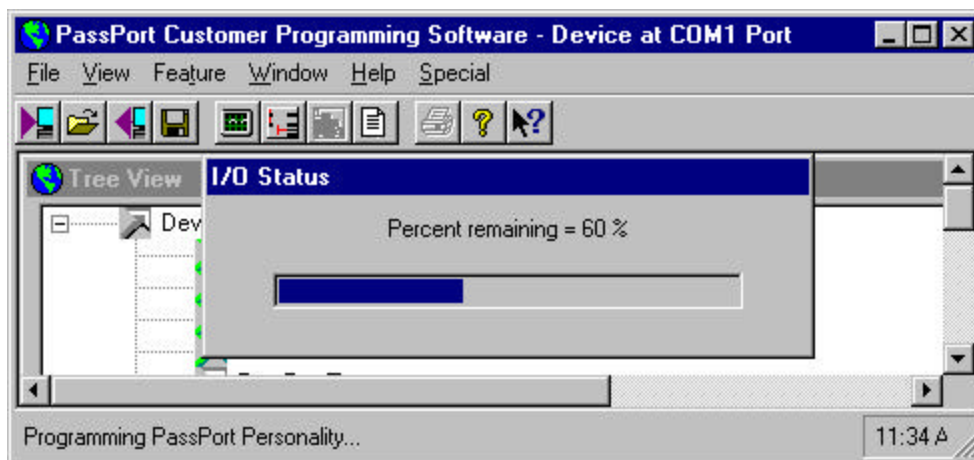
OR

- b. Select “File > Write Device” and the “Select Port” window appears.

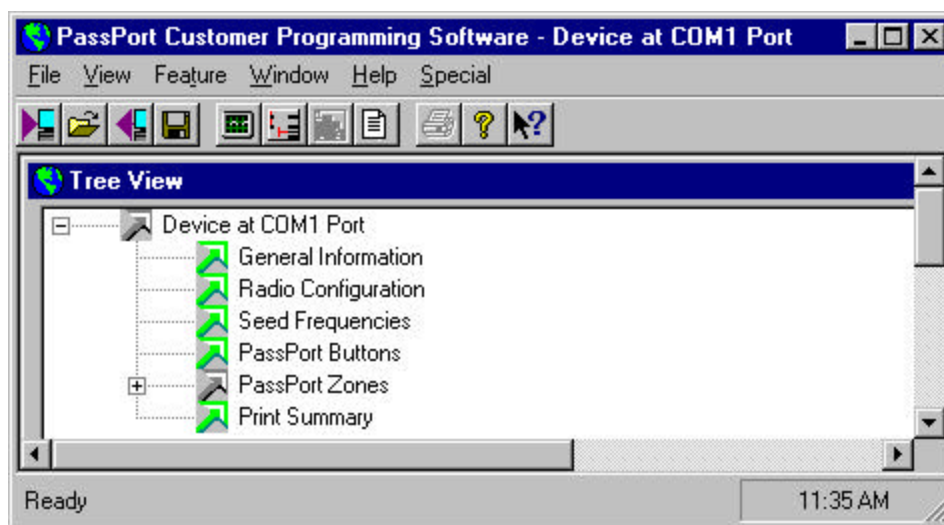


Select the port that the RIB or RIB'less cable is connected to and click the “OK” button.

6. An “I/O Status” bar appears while writing.



7. Upon completion, the “Tree View” window appears.



8. Please be aware of the following fields that have been added in the “PassPort Zones” window – “RSSI” tab in PPCPS R03.02.00 release.
- Assume Single Site Per Frequency
  - RSSI Auto Enable in Fringe Areas
  - RSSI Preemption Threshold and Preemption Option.

The above fields are used to customize performance for the Basic Site Search, Strongest Site Search, and RSSI Preemption enhancements. Please refer to the PassPort Firmware R06.02.13 Customer Release Notes and the PassPort CPS R03.02.00 Customer Release Notes for more information.

